

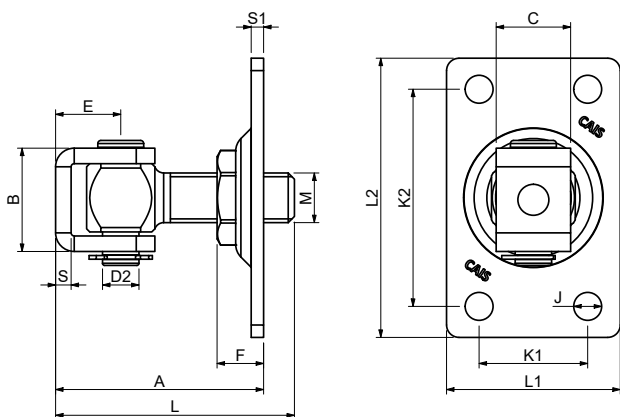
## Technical report


Art.

### HP 24 R



Art.	HP 24 R
Product	ADJUSTABLE HINGE WITH PLATE, FIXED
Item code	1700387
Material	Body - S 355 J2C, „C“ claim - S 235 JR, Plate - S235 JR, Pin - 11SMn30, Hexagon - 11SMn30, Rivet nut - 11SMn30, Retaining ring - DIN 6799
Surface finish	ČSN EN ISO 19598 - Fe//Zn12//Cn//T2nL

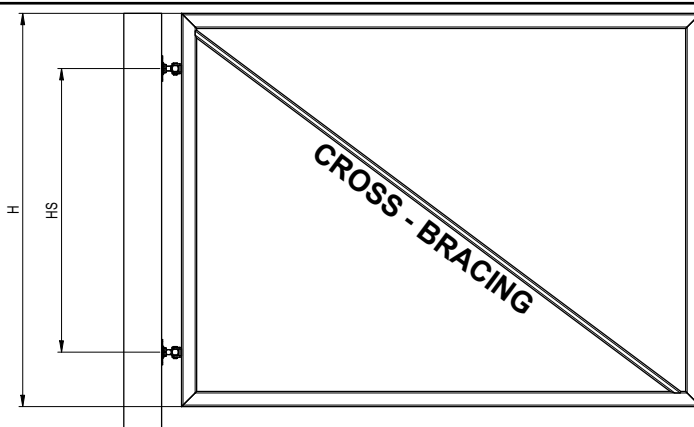


Art.	M	L1	L2	A min./max.	L	B	C	D2	E	F	J	K1	K2	S	S1	CAP.	1pc		CODE	EAN		
				mm					∅	mm	∅					mm	1 pair/kg	kg	pcs	kg		
HP 24 R	M24	94	110	70 - 106	106	45	34	17	30	22	11	65	81	6	5	220	1,06	10	10,6	1700387	8595694802440	

\*All specifications, photographs and technical drawings are the property of CAIS s. r. o. and are protected by copyright. Product specifications can be changed without prior notice.

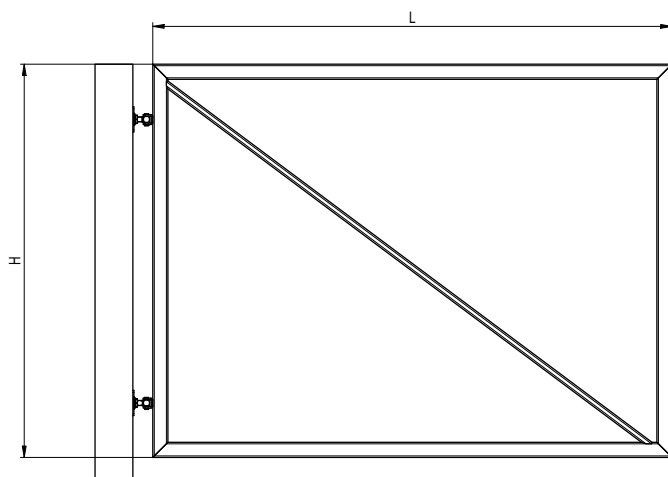
## 1) HINGE SPACING

$$HS = \min. 75\% H$$



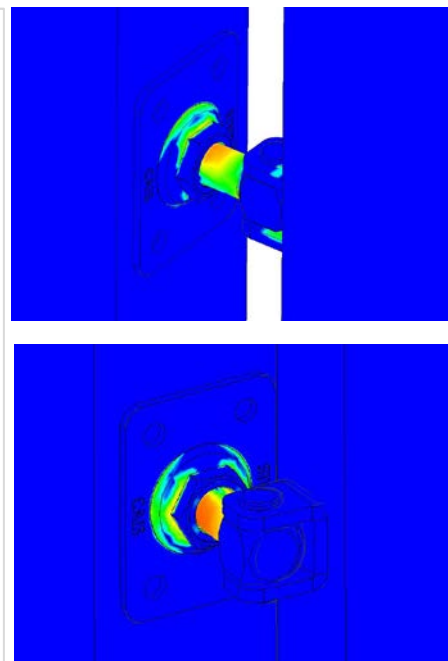
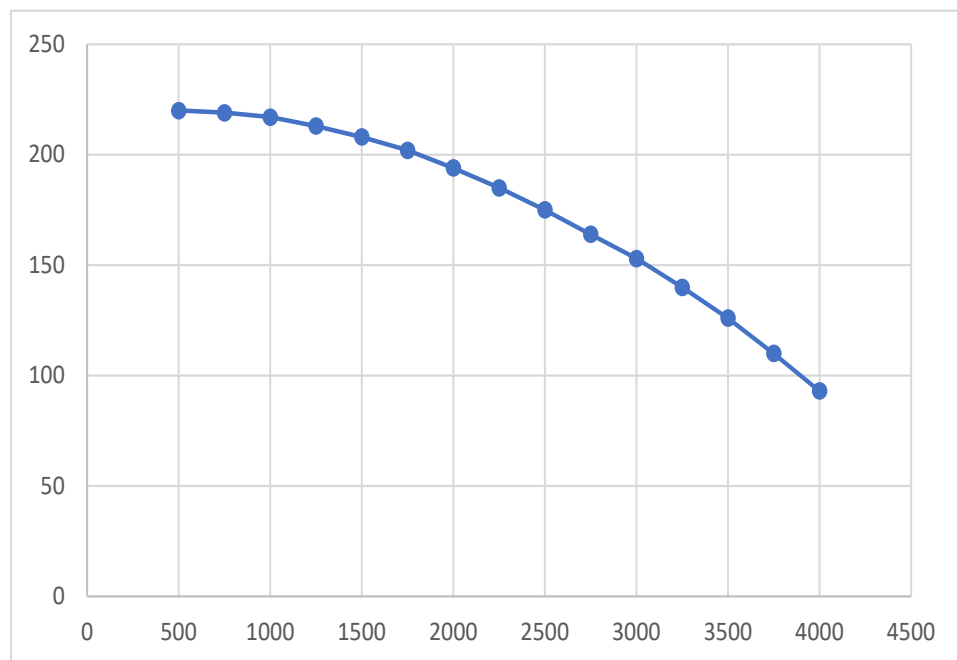
## 2) ASPECT RATIO

$$L/H \leq 2$$



## 3) ASPECT RATIO

$$L = \max. (H + 40\% H)$$



Art.	"MAX WIDTH"	"MAX HEIGHT"	"MAX"	"MAX CAPACITY"	CYCLES	MAINTENANCE
	mm		m2	1 pair/kg	nr	
HP 24 R	4000	3000	8	220	200000	Greasing „every 25 000 cycles / 1 times per year“

\*All specifications, photographs and technical drawings are the property of CAIS s. r. o. and are protected by copyright. Product specifications can be changed without prior notice.